

Visual Verification Bridge

Powered by **CHeKT**®

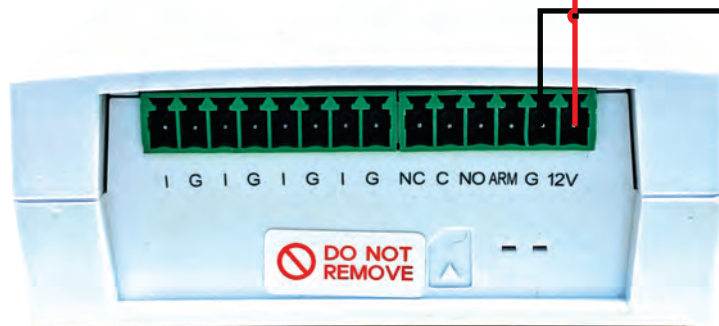
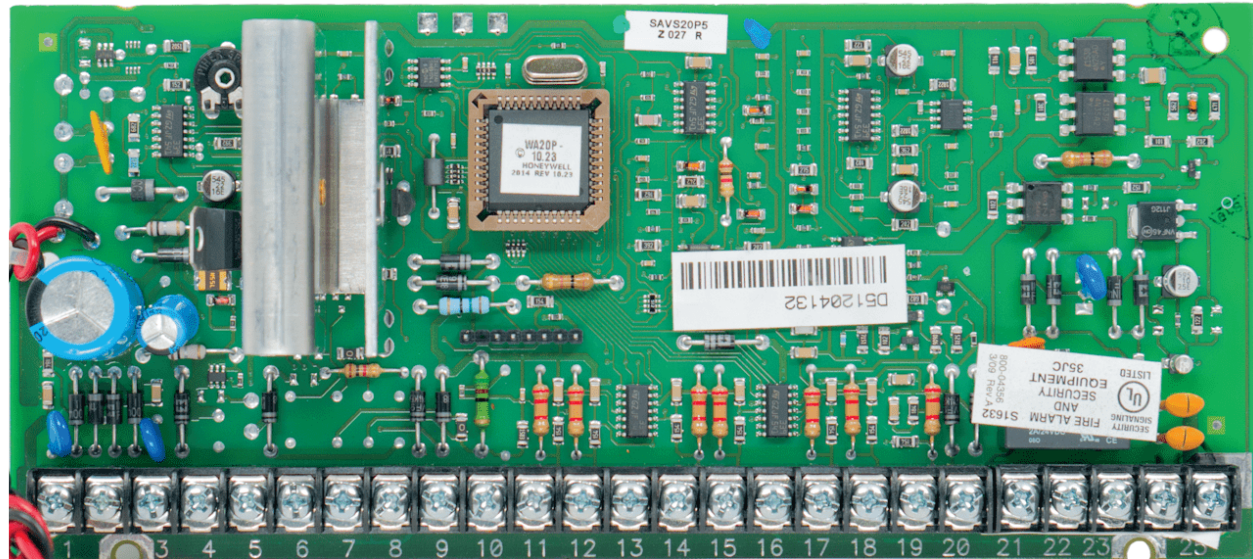
CKB-304v2 Wiring Guide



Honeywell
Vista

Honeywell

Vista



CKB-304v2
Visual Verification Bridge

Step 1

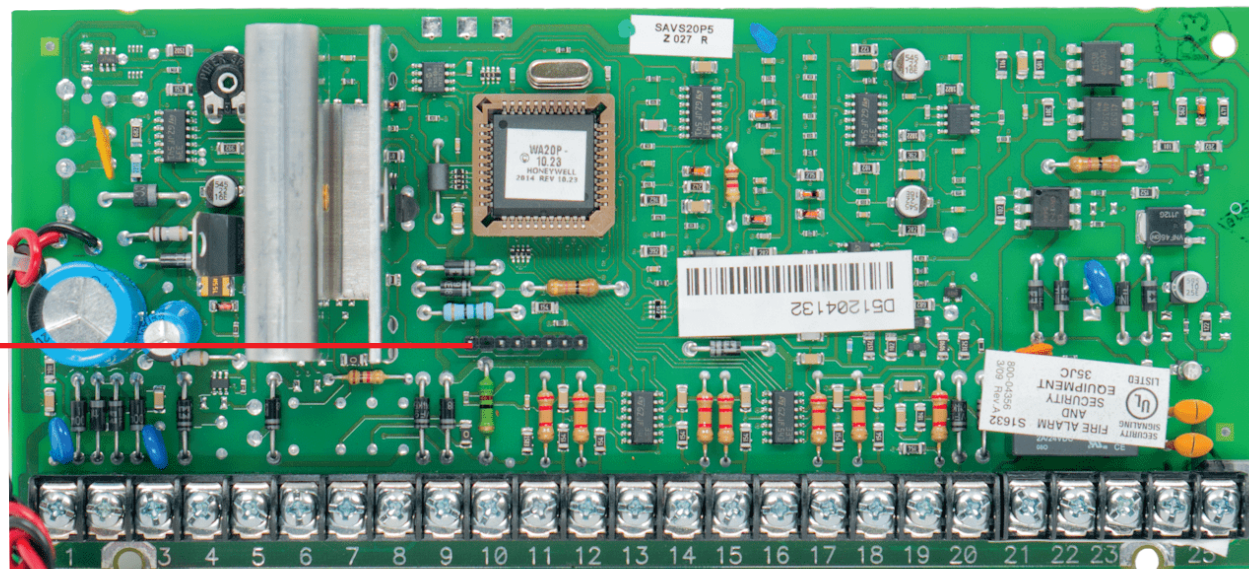
Power up the Bridge

Note: The Bridge draws 400mA peak. When powering the Bridge with the alarm, consider this when estimating your powered devices and back up battery.

In most cases*, an additional power supply is recommended. If a separate power supply is used, the ground must remain common.

*The Vista provides 600mAmps of AUX power

2



Honeywell
Vista

Step 2

Run wire from OUTPUT 17 to the Arming Input

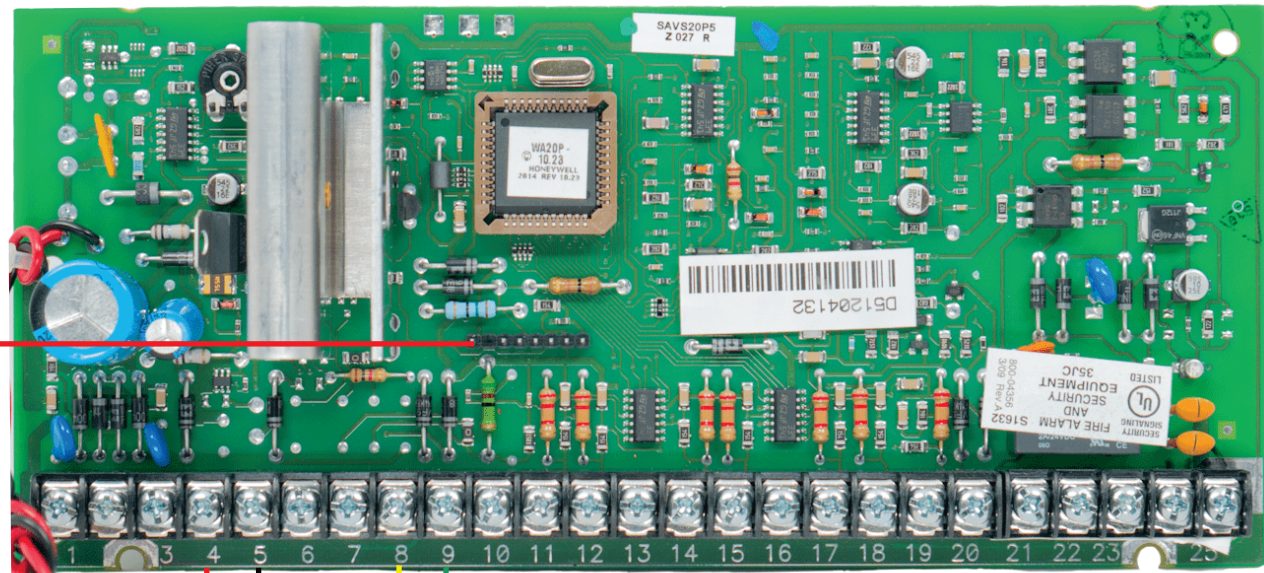
Note: This will allow you to arm/disarm the Bridge with the alarm panel.



CKB-304v2
Visual Verification Bridge

Honeywell

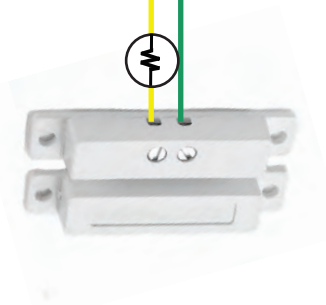
Vista



CKB-304v2
Visual Verification Bridge

EXAMPLE

This is a typical burg zone with the EOL at the device.





Run wire from the Bridge input the zone terminal of the panel.

This wiring method requires the Bridge to share a common ground with the alarm panel. Otherwise, the Zone Ground must be wired to the Bridge Input Ground.

